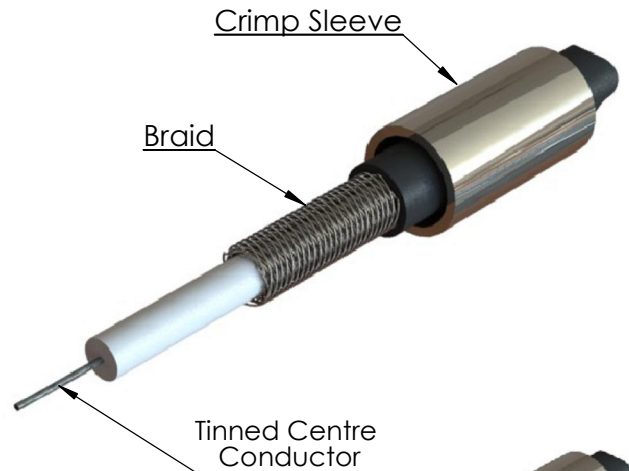
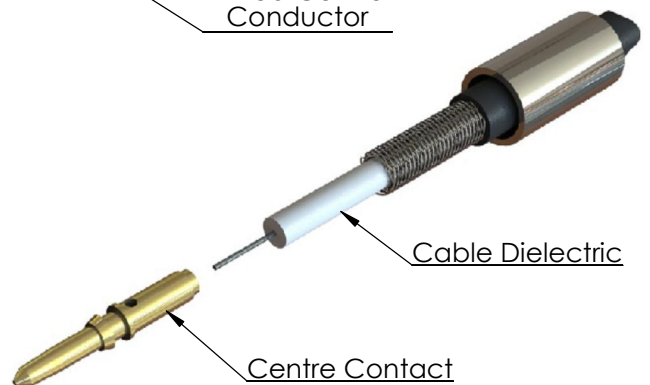


# ASSEMBLY PROCEDURE : AP004

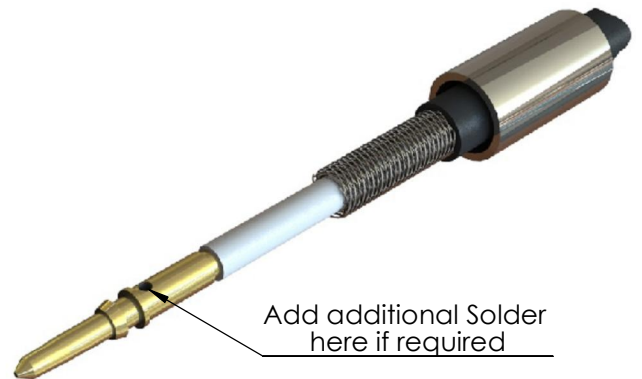
1. Slide the crimp sleeve onto the cable.
2. Strip the cable to the dimensions given on the connectors datasheet. If the cable has a foil screen please check the datasheet for the stripping length of this screen.
3. Check to ensure the cables centre conductor is undamaged. Then using an appropriate solder, carefully Tin the centre conductor.



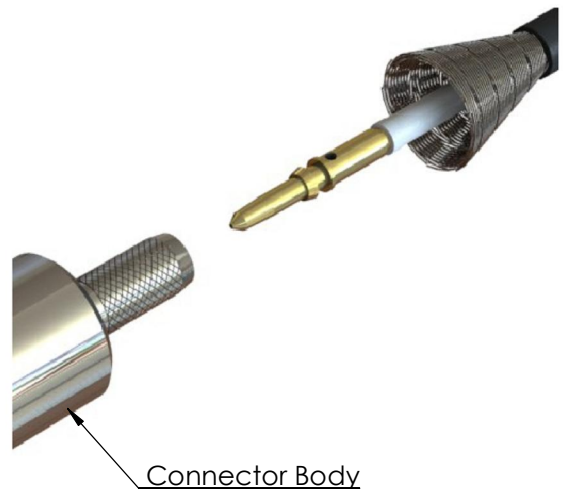
4. Slide the centre contact onto the Tinned cable conductor up to cable dielectric.
5. Ensure that the conductor is visible through the contact's inspection hole.




6. Carefully heat the Centre Contact using the appropriate tool, so that the solder melts, adding additional as required. Care should be taken not to overheat the contact to avoid damaging the Sleeve or cable dielectric. Allow to cool and inspect joint.



7. Fan the cable braid out. On foil screened cables the foil must remain around the cables dielectric, and pass inside the connectors rear bore. It must never be placed over the knurled area, as the tapes often used in the construction of this screen could insulate all the screens from the connector.

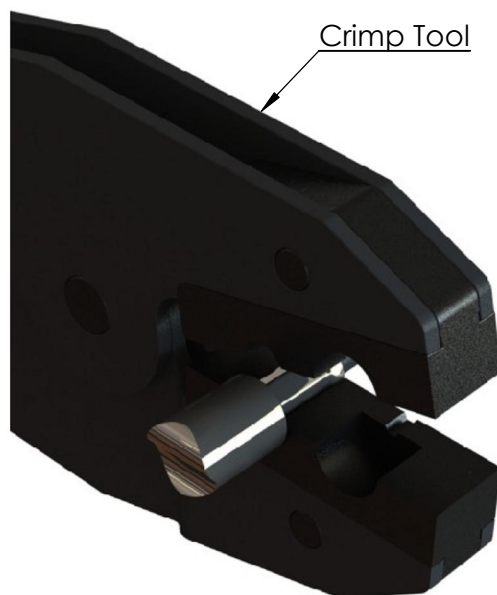


© 2010. THIS DOCUMENT IS THE PROPERTY OF OWNER. REPRODUCTION OR COMMUNICATION IN ANY FORM TO A THIRD PARTY IS PROHIBITED WITHOUT PRIOR WRITTEN CONSENT

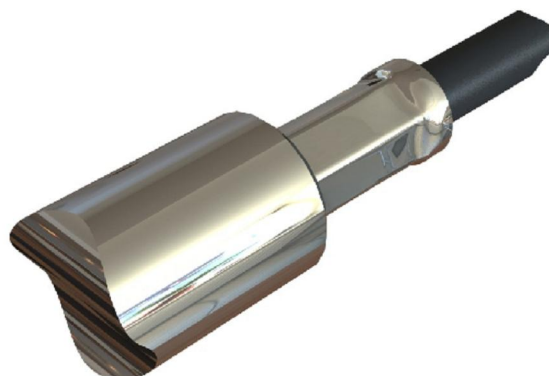
<b>A4</b>	<b>SHEET 1 OF 2</b>		<b>DIMENSIONS ARE IN MILLIMETERS</b>		
<b>REVISION :</b>	<b>A00</b>	<b>NAME</b>	<b>SIGNATURE</b>	<b>DATE</b>	
<b>ISSUE :</b>	<b>1</b>	<b>DRAWN</b>	GE		05/12/2010
		<b>CHK'D</b>	IG		05/12/2010
		<b>APPV'D</b>			
<p><b>6-8 COLNE ROAD, TWICKENHAM, MIDDLESEX. TW1 4JR</b></p> <p>THE INFORMATION IS GIVEN AS AN INDICATION ONLY AND IS SUBJECT TO CHANGE WITHOUT NOTICE. IN THE CONTINUAL GOAL TO IMPROVE OUR PRODUCTS, WE RESERVE THE RIGHT TO MAKE ANY MODIFICATIONS NECESSARY WITHOUT PRIOR NOTICE.</p>					

# ASSEMBLY PROCEDURE : AP004


8. Slide the cable into the connector and push home until the centre contact "CLICKS" into place in the connectors dielectric. Ensure all the braid strands pass outside over the knurled area of the connector.
9. Slide the crimp sleeve forward over the braid and knurled area of the connector to the rear of the connector body.
10. Crimp the crimp sleeve using the appropriate sized crimp tool given on the connectors datasheet (trim excess braid if necessary)



11. Carefully check the assembly.



© 2010. THIS DOCUMENT IS THE PROPERTY OF OWNER. REPRODUCTION OR COMMUNICATION IN ANY FORM TO A THIRD PARTY IS PROHIBITED WITHOUT PRIOR WRITTEN CONSENT

<b>A4</b>	<b>SHEET 2 OF 2</b>		<b>DIMENSIONS ARE IN MILLIMETERS</b>		
<b>REVISION :</b>	<b>A00</b>		<b>NAME</b>	<b>SIGNATURE</b>	<b>DATE</b>
<b>ISSUE :</b>	<b>1</b>	<b>DRAWN</b>	GE		05/12/2010
		<b>CHK'D</b>	IG		05/12/2010
		<b>APPV'D</b>			
<b>6-8 COLNE ROAD, TWICKENHAM, MIDDLESEX. TW1 4JR</b>					
<small>THE INFORMATION IS GIVEN AS AN INDICATION ONLY AND IS SUBJECT TO CHANGE WITHOUT NOTICE. IN THE CONTINUAL GOAL TO IMPROVE OUR PRODUCTS, WE RESERVE THE RIGHT TO MAKE ANY MODIFICATIONS NECESSARY WITHOUT PRIOR NOTICE.</small>					